

# 2009 HUNGERFORD LAKE CAMPGROUND RIDES



**THREE FANTASTIC RIDES - ONE EMINENT LOCATION!**



## **May 16 & 17** **Spring Fun CMO**

**\*Beginners Clinic @ 10 am Saturday\***

Sherri & Bob Wager 616- 897-1151

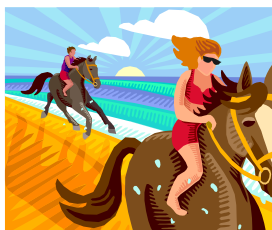
[SherriWager@aol.com](mailto:SherriWager@aol.com)

## **July 10, 11 & 12** **Lesson's Learned CMO**

Val Kadzban & Shelby Ream

616-675-7342

[KadzbanVal@aol.com](mailto:KadzbanVal@aol.com)



## **Sept. 25 & 26** **(Friday & Saturday)**

## **Rock & Roll Baby CMO**

Kim Nobel 616-877-0188,

[kdnobel@juno.com](mailto:kdnobel@juno.com)

Alison Bennett 616-784-1645

[albjennett@comcast.net](mailto:albjennett@comcast.net)

**Visit us online at: [www.micmo.org](http://www.micmo.org)**

Entry fees: \$10 for NACMO annual members and \$15 for day members

\$5 for Junior members or \$10 for Junior day members

\$5 for Beginners Clinics

NACMO & MicMO sanctioned rides, long and short courses each day. We will have a Potluck Saturday followed by the awards ceremony.

**Awards will be given for long and short course.**

**Friday rides - Riders may start after 12:00pm. Saturday rides - Riders may start as early as 8:00am, and are encouraged to start by 1:00pm.**

**Sunday rides - Riders MUST start before 12:00pm on Sunday**

For more information go to [www.micmo.org](http://www.micmo.org) or contact Sherri Wager 616-897-1151, via email [sherriwager@aol.com](mailto:sherriwager@aol.com)

Camping is available in the equestrian campground. Hungerford Lake is a National Forest Fee Area, \$5 day or \$15 week per vehicle (pay at the entrance), but there is no camping fee. There are 48 large camp sites with fire pits, picnic tables and picket posts. Toilets and water can be far from camping site, so be prepared. This is a National Forest Fee Area, \$5 day or \$15 week per vehicle (pay at the entrance), but there is no camping fee. Campsites are first come first serve; they can fill up fast, so arrive early. **Bring drinking water, only horse water is available.**

**DIRECTIONS:** Hungerford Lake: From Big Rapids take M-20 (exit #139 off US 131) west 5 miles to Norwich Town Hall. Go north on Cypress .5 miles to cemetery. Turn east on Hungerford Lake Rd. for .5 mile then turn north on Forest Rd 5134 for 1 mile to Trail Camp (on left).